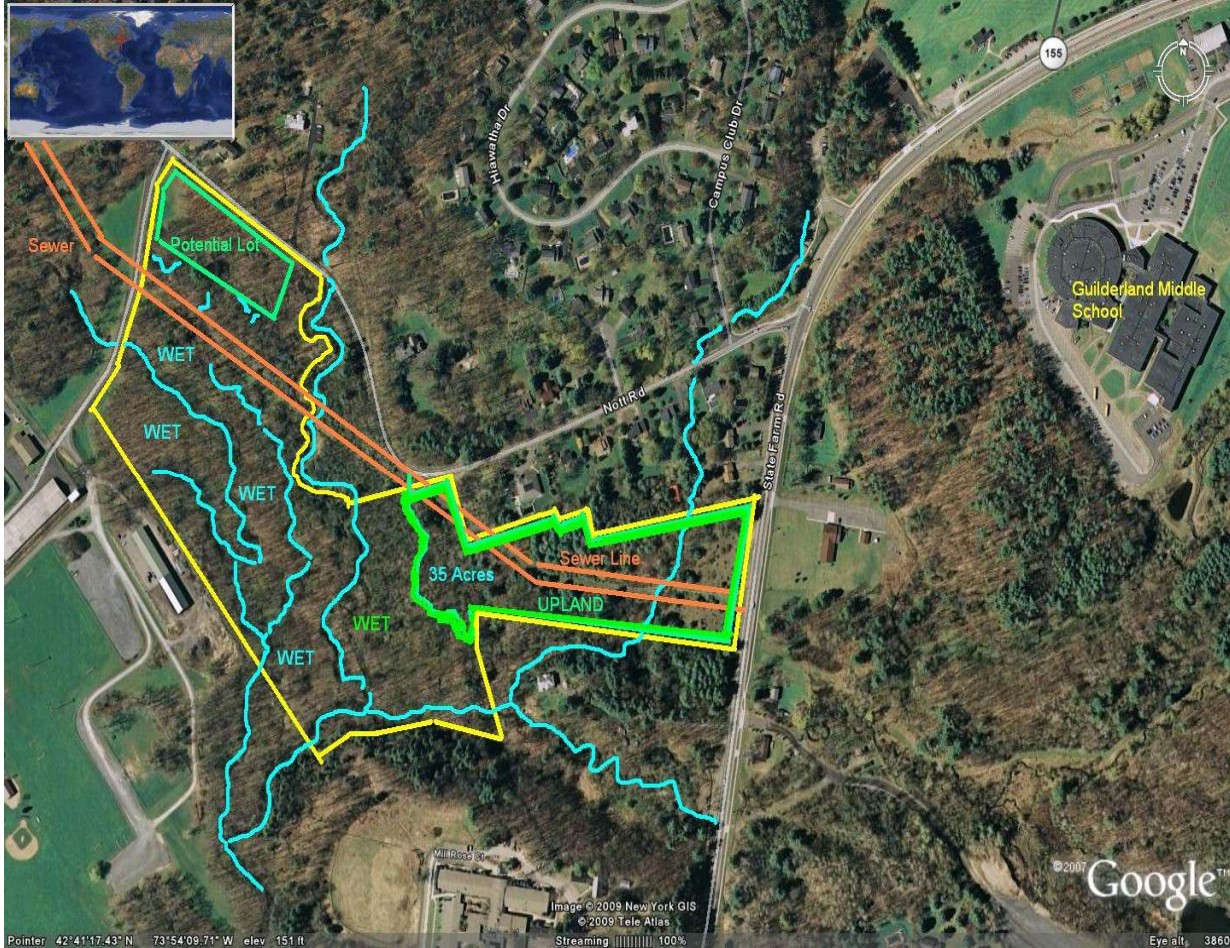


± 35 Acres For Sale  
\$300,000

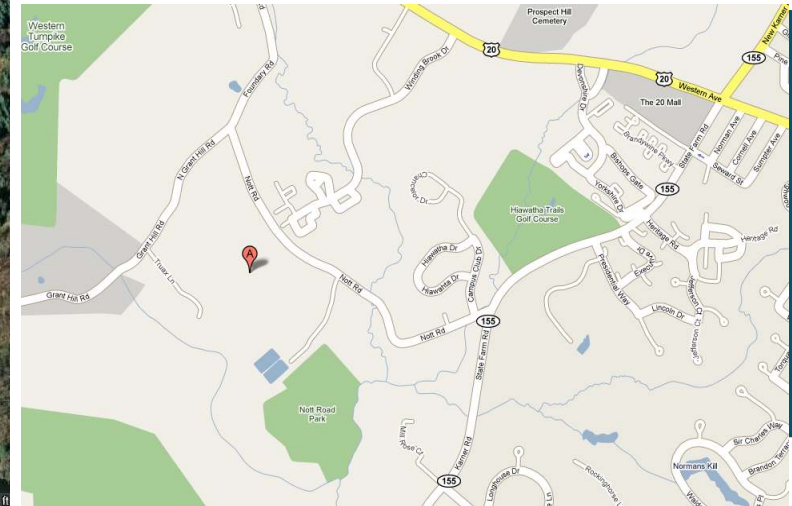
0 Nott Road, Guilderland, NY 12084

Zoned RA-3 – Rural Agricultural – 3 acre minimum lot size



### Parcel Features

- Potential 4 lot minor subdivision
- 1 mile to Rt. 20 commercial corridor
- All infrastructure on site or at road
- Sewer hook-up or install septic fields
- Frontage on Nott Rd & Rt. 155
- Taxes \$3,200 per year
- Beautiful Residential Setting



Albany County, NY

**NAI Platform**

Commercial Real Estate Services, Worldwide.

No warranty, express or implied, is made as to the accuracy of the information contained herein. This information is submitted subject to errors, omissions, change of price, rental or other conditions, withdrawal without notice, and is subject to any special listing conditions imposed by our principals. Cooperating brokers, buyers, tenants and other parties who receive this document should not rely on it, but should use it as a starting point of analysis, and should independently confirm the accuracy of the information contained herein through a due diligence review of the books, records, files and documents that constitute reliable sources of the information described herein.

Please Contact:

**Jim Harder ext 221**

**Associate Broker**

Cell (917) 575-0165

[jharder@naiplatform.com](mailto:jharder@naiplatform.com)

**14 Corporate Woods Blvd**

**Albany, NY 12211**

**tel 518 465 1400**

**fax 518 465 1441**

[www.NAIPlatform.com](http://www.NAIPlatform.com)