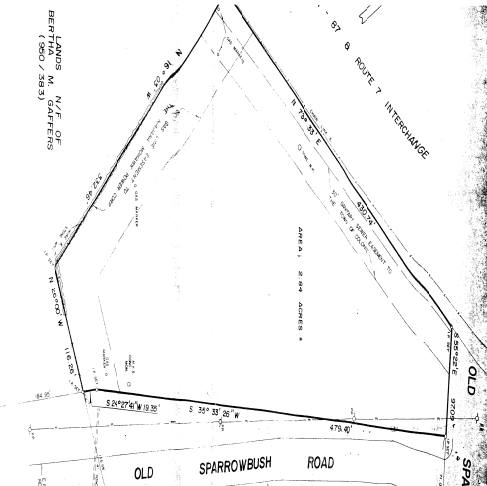


Vacant Land For Sale

38 Sparrowbush Road Latham, NY



Property Profile

- **Size:** 2.84 Acres
- **Frontage:** 479 Feet
- **Zoning:** HCOR
- **Utilities:** Water - munic.
Sewer - munic.

Property Features

- Prime building site with Northway exposure at Exit 7.
- Owner will also build to suit and lease.
- 2.84 acres directly behind Latham Farms.
- Easy access from all directions.
- Located at the rear entrance to Latham Farms.
- Concept approved for 30,000 Sq Ft professional office building

Offered For Sale:
\$1,200,000

NAI Platform

Commercial Real Estate Services, Worldwide.

The information contained herein has been given to us by the owner of the property or other sources we deem reliable, we have no reason to doubt its accuracy, but we do not guarantee it. All information should be verified prior to purchase or lease.

Contact information

Tom Cairns
NAI Platform
direct 518 465 1400 Ext 210
fax 518 465 1441
Email TCairns@NAIPlatform.com
www.NAIPlatform.com